



Capital Project Workshop

March 13, 2017

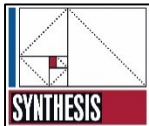
Synthesis Architects

Jim Graham, RA
Principal

Calvin Rugg, RA
Project Architect

M/E Engineering

Bob Abromaitis
Project Manager/Senior Engineer



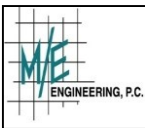
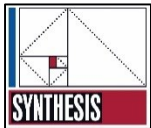


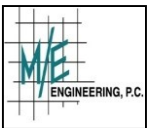
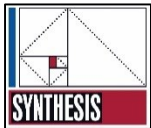
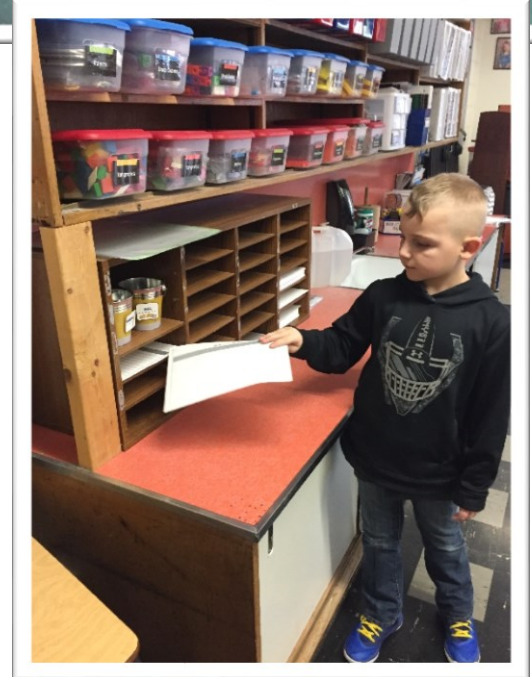
Capital Project Workshop

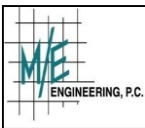
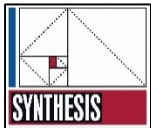
March 13, 2017

GOALS:

- Discuss the Board's and Administration's Vision.
- Review design team direction from January 30, 2017.
- Provide the design team direction at the conclusion of the workshop.



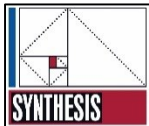
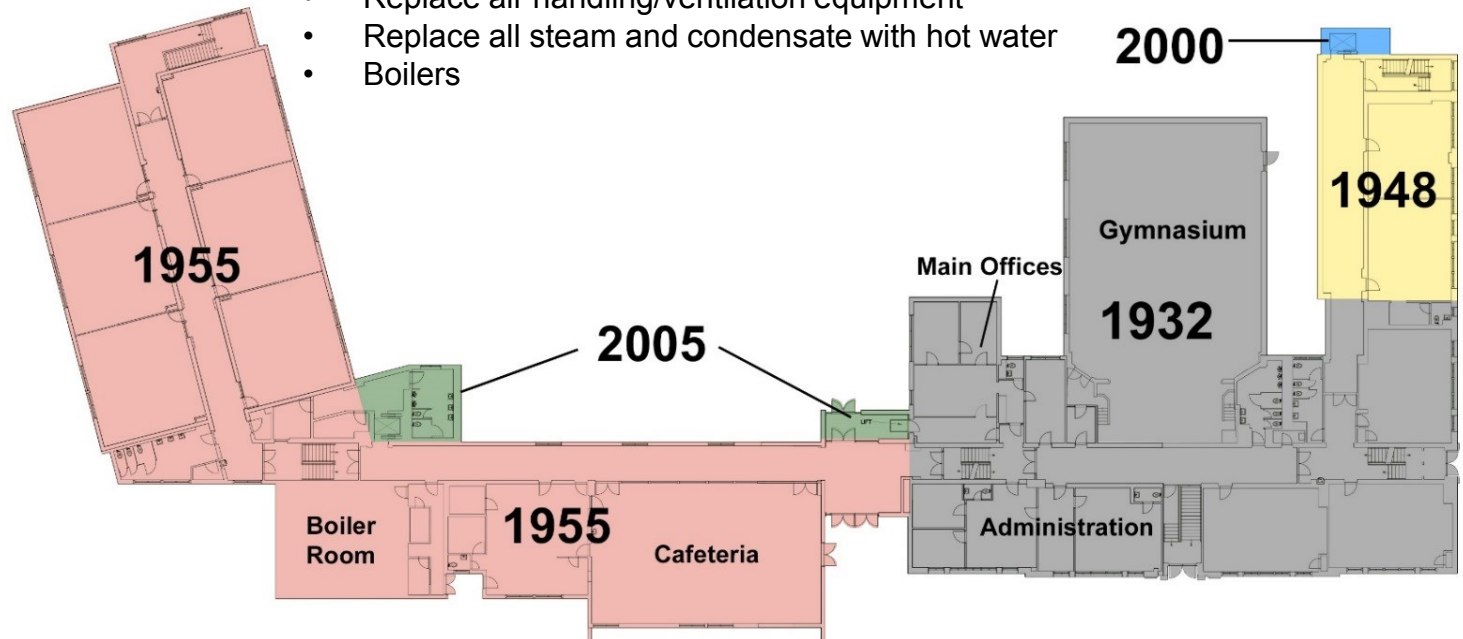






Elementary School

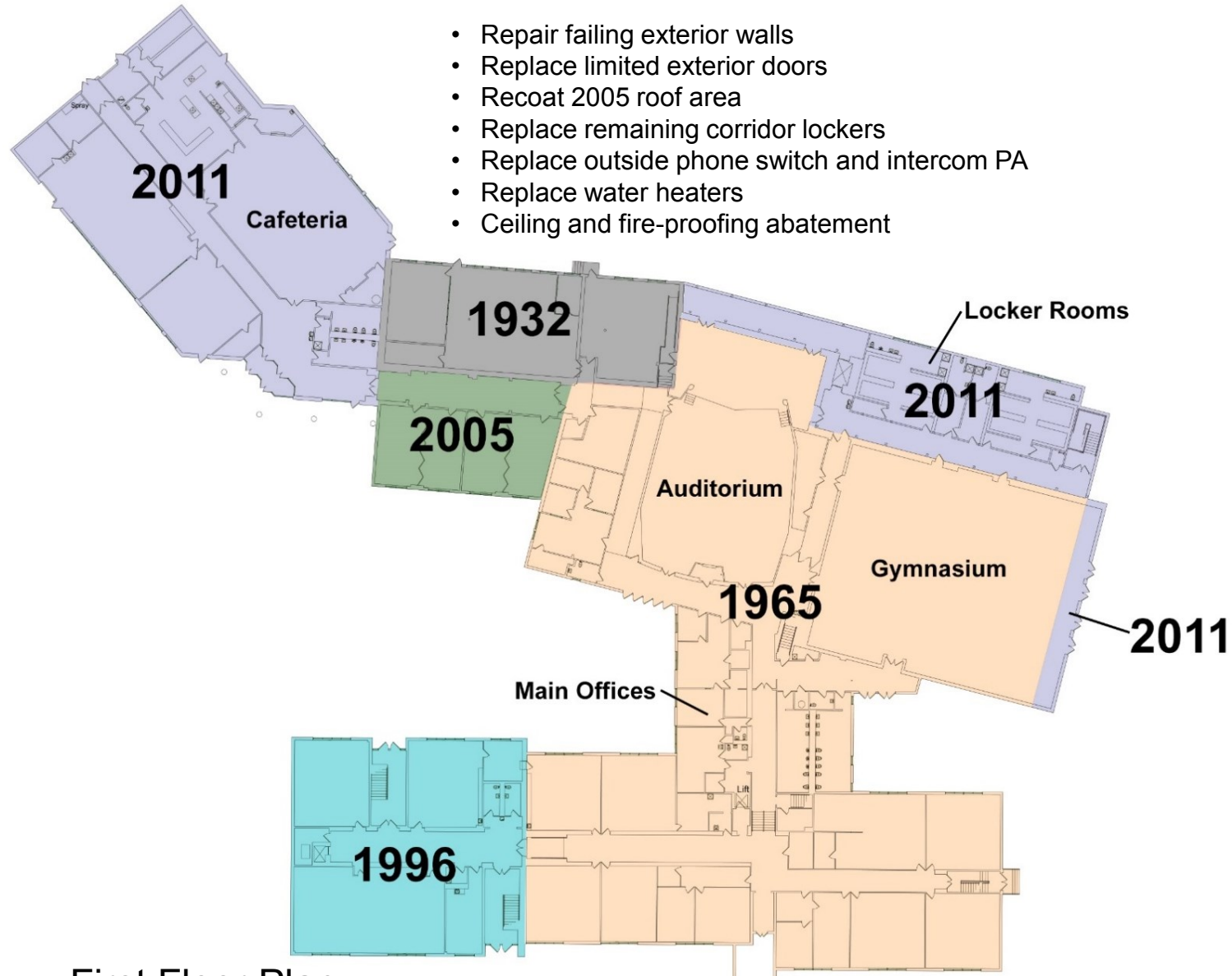
- Repair failing exterior walls
- Replace exterior doors
- Rebuild exterior stairs and ramps
- Replace failing sidewalks
- Replace several areas of roof
- Replace all electrical distribution and branch circuiting
- Replace electrical service switch
- Replace hot water heaters
- Replace water distribution system mains
- Replace plumbing drainage mains, branches and stacks
- Replace plumbing fixtures and trim throughout
- Address water pressure issues
- Abandon 1955 septic system, connect to campus septic system
- Replace air handling/ventilation equipment
- Replace all steam and condensate with hot water
- Boilers



First Floor Plan

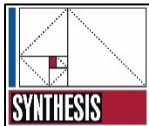


Secondary School



- Repair failing exterior walls
- Replace limited exterior doors
- Recoat 2005 roof area
- Replace remaining corridor lockers
- Replace outside phone switch and intercom PA
- Replace water heaters
- Ceiling and fire-proofing abatement

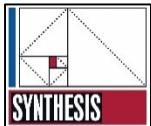
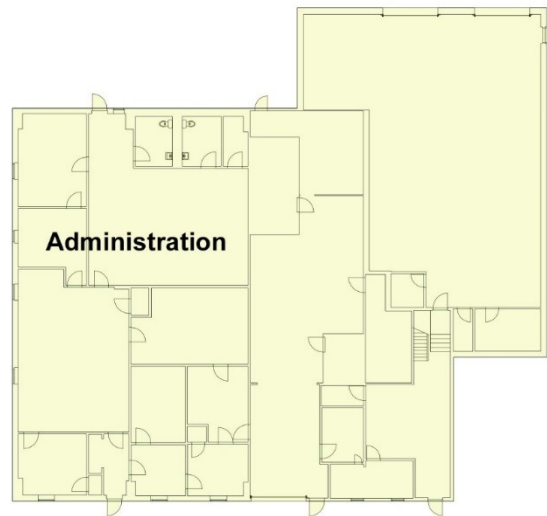
First Floor Plan





Bus Garage/Administration

- Plumbing Fixtures
- Fire Alarm System
- Interior Accessible Route



Bus Garage Floor Plan

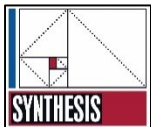


Elementary School

Reconfiguration / Modernization

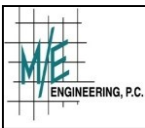
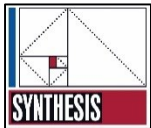
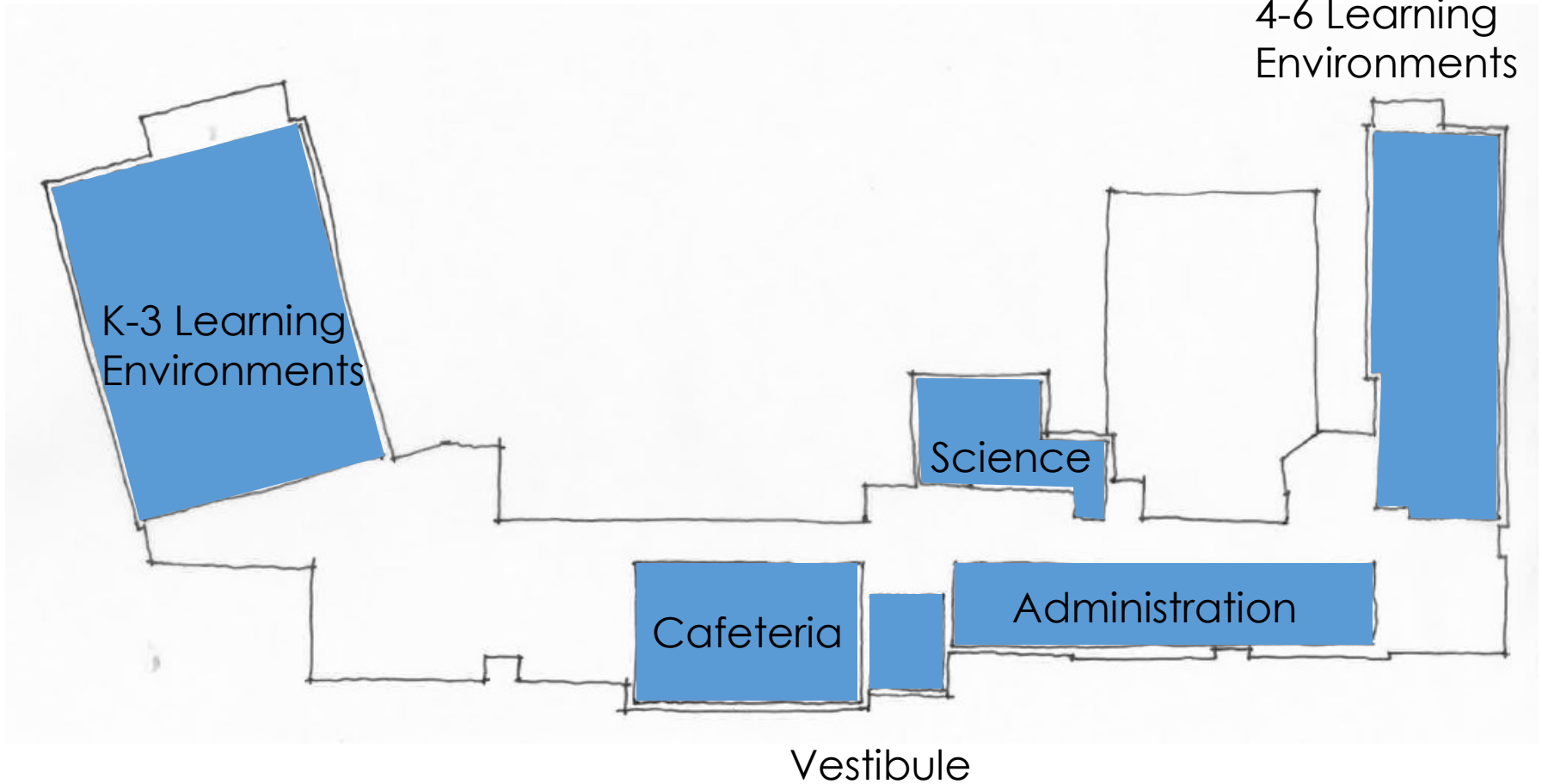
- Improve opportunities for grade level collaboration (1-1-1, 2-2-2, through 5th)
- Provide educational spaces that support more inclusive Spec. Ed.
- Provide professional planning spaces
- Improve early elementary access to support services (speech, resource)
- Create dedicated elementary science space
- Renovate cafeteria for multi-use space

***We want our building to meet the needs of
21st century learners.***





Elementary School





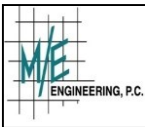
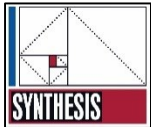
Modernization of Learning Environments



**Traditional Classroom Exhibit
New York State Museum**



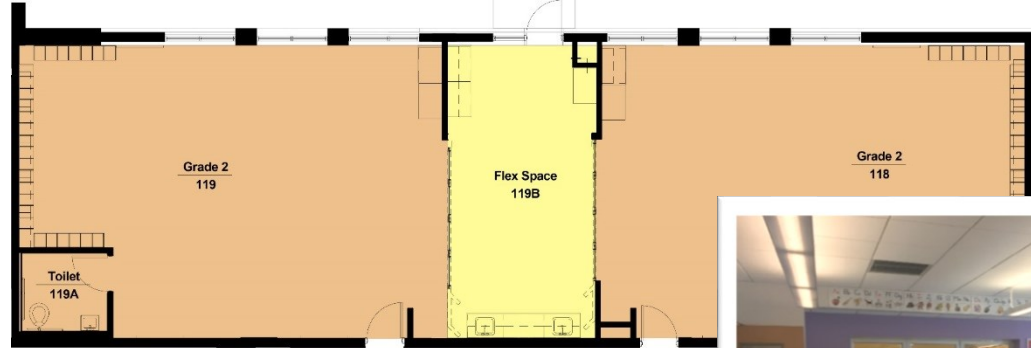
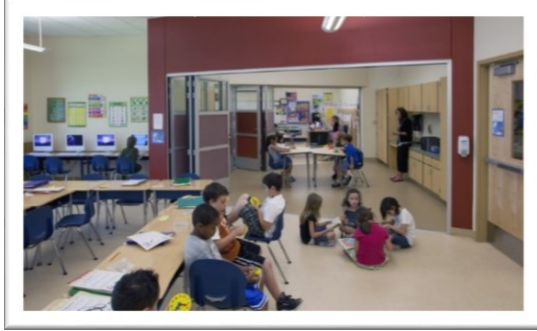
BKW Elementary





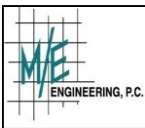
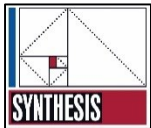
Primary Classrooms

Case Study: Duanesburg Elementary



Case Study:

Forest Ave. Elementary Middletown, Rhode Island

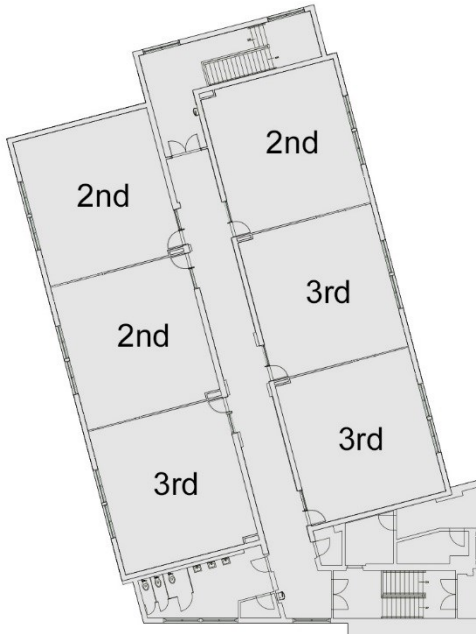




Primary Classroom Wing Ca. 1955



Key Plan

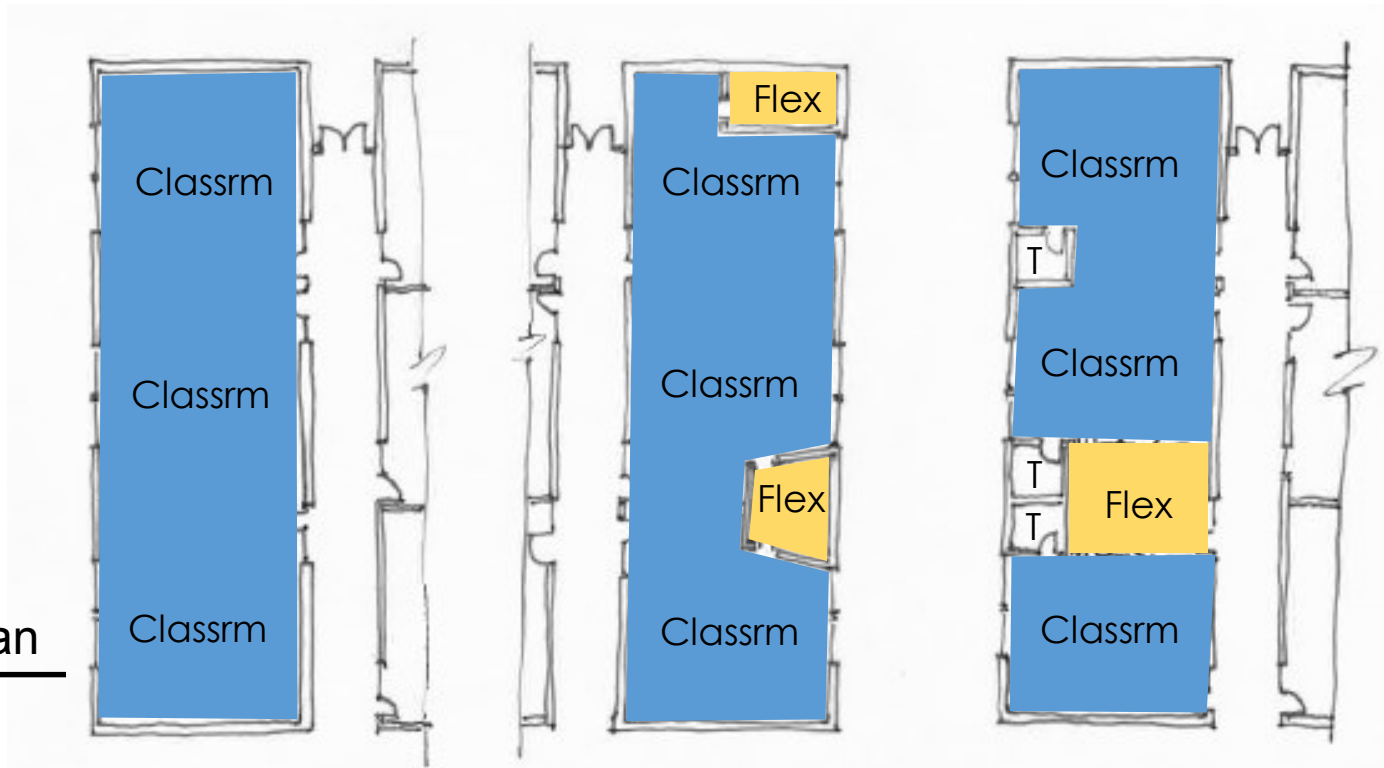


Existing First Floor Plan

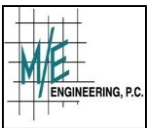
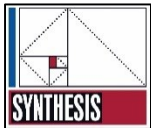
Option 1

Option 2

Option 3



Possible Classroom Floor Plans



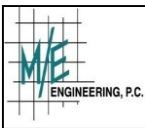
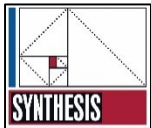


Primary Classroom Wing Ca. 1955



Option 4

Possible Classroom Floor Plan

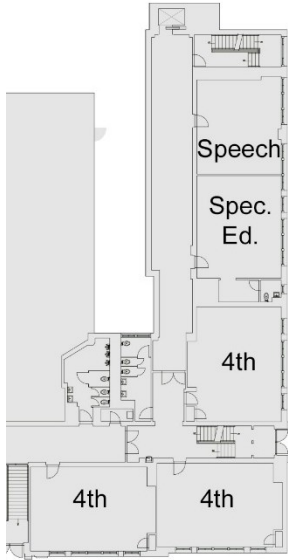




Upper Elementary Classroom Wing ca. 1948

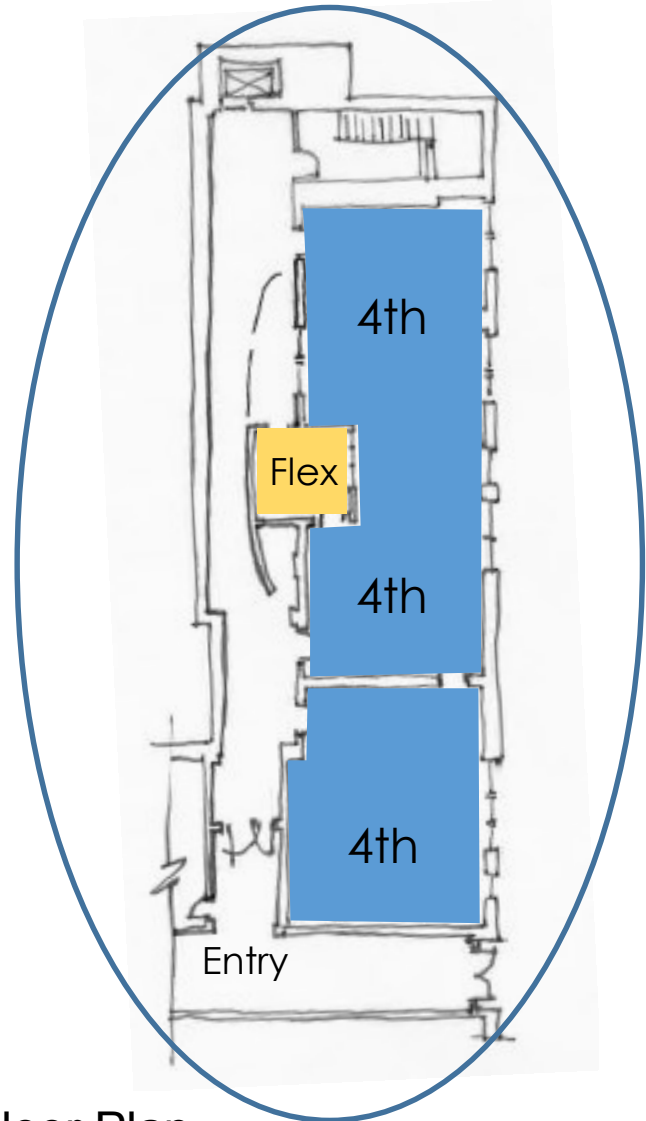


Key Plan

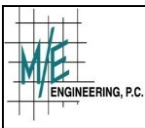
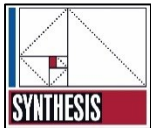


Existing First Floor Plan

Grade Level
Learning Suites



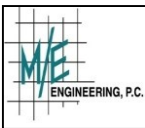
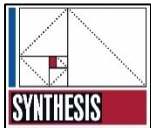
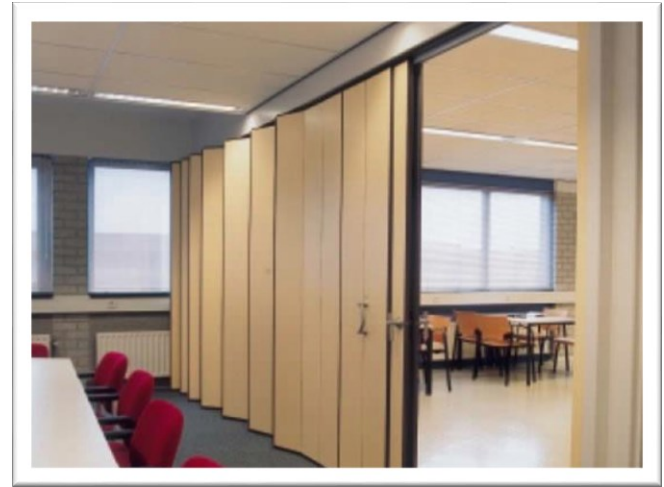
Possible Classroom Floor Plan





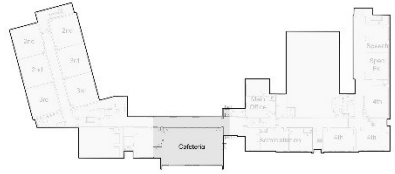
Cafeteria

- Design for flexibility in program:
Acoustics, A/V, room dividers

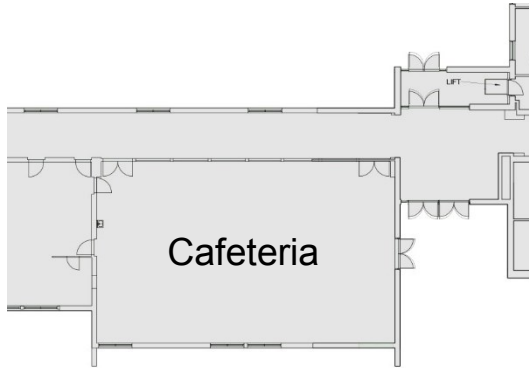




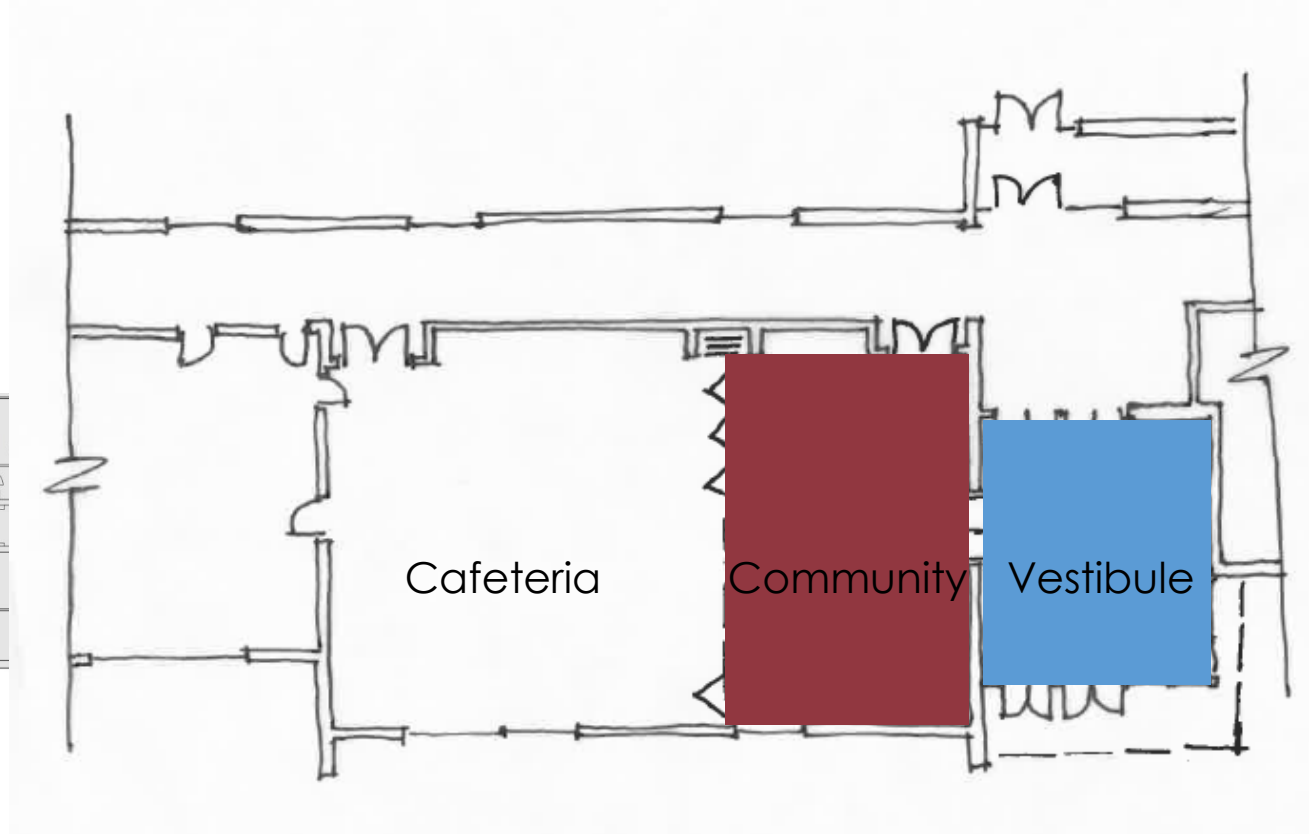
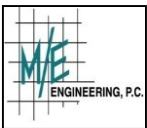
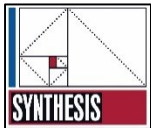
Cafeteria



Key Plan



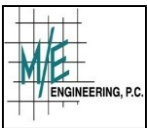
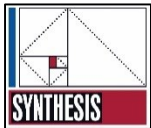
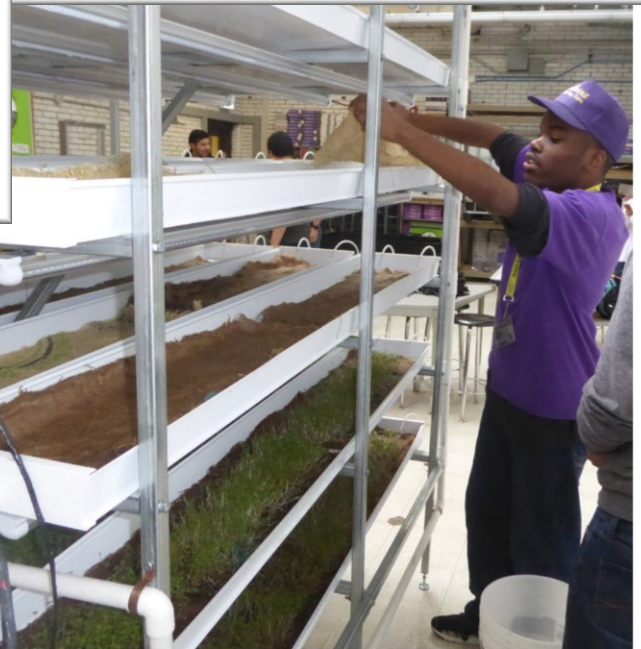
Existing First Floor Plan



First Floor Plan



Dedicated Elementary Science Space

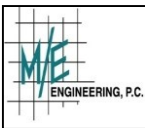
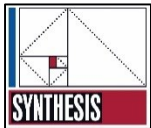
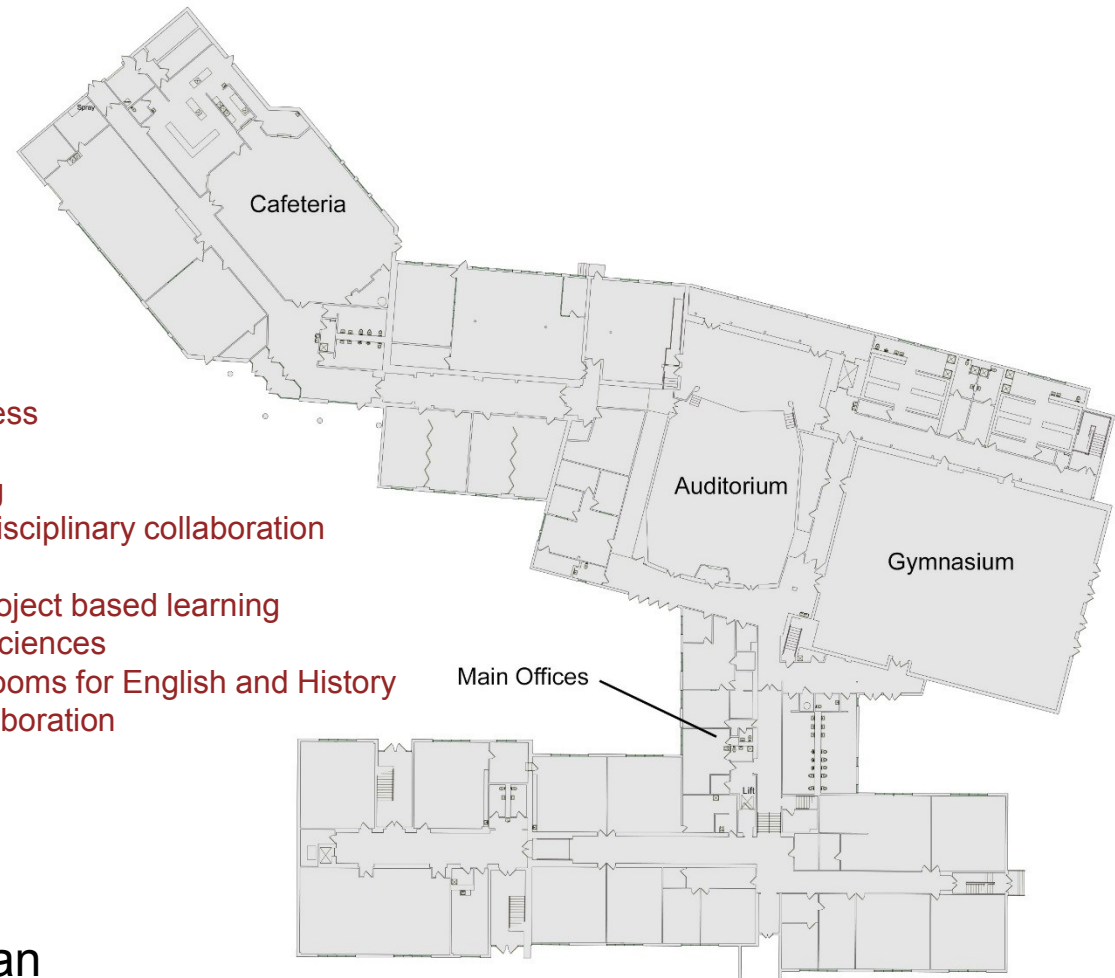




Secondary School

Reconfiguration / Modernization

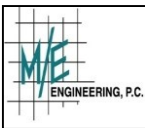
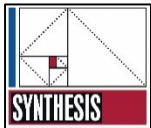
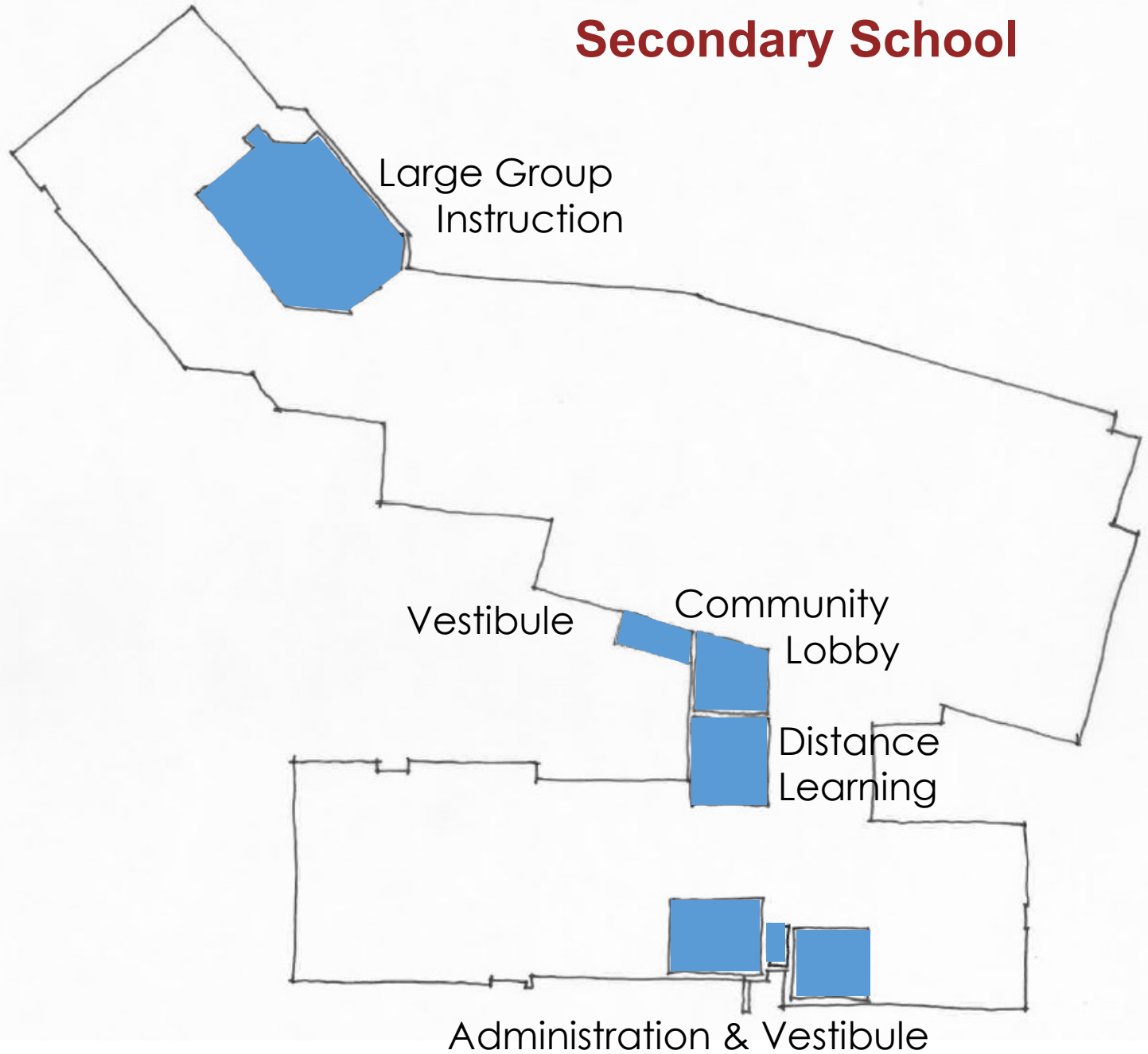
- Distance learning and improved community access
- Provide large group instruction area
- Reinforce 7-8 MS Wing, Separate 9-12 HS Wing
- Improve opportunities for small group and interdisciplinary collaboration
 - Co-locate support spaces and Spec. Ed.
 - Provide Spec. Ed. spaces that support project based learning
 - Maintain large classrooms for math and sciences
 - Provide smaller instruction/project work rooms for English and History
 - Provide spaces that support teacher collaboration



First Floor Plan

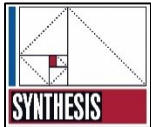


Secondary School



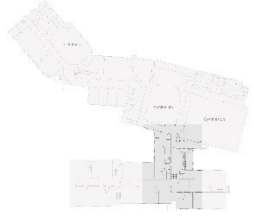


Secondary - New Lobby Space

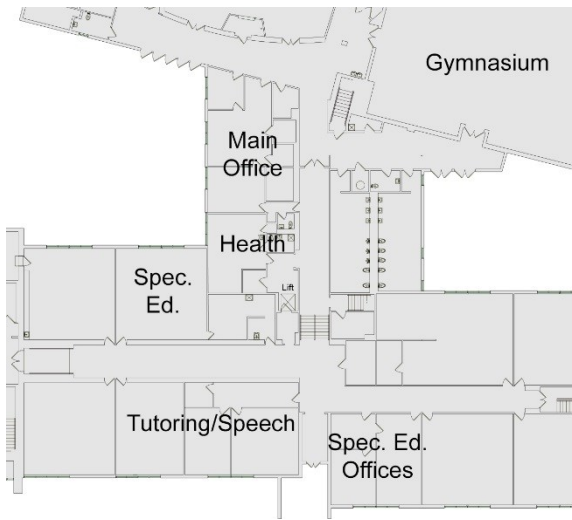




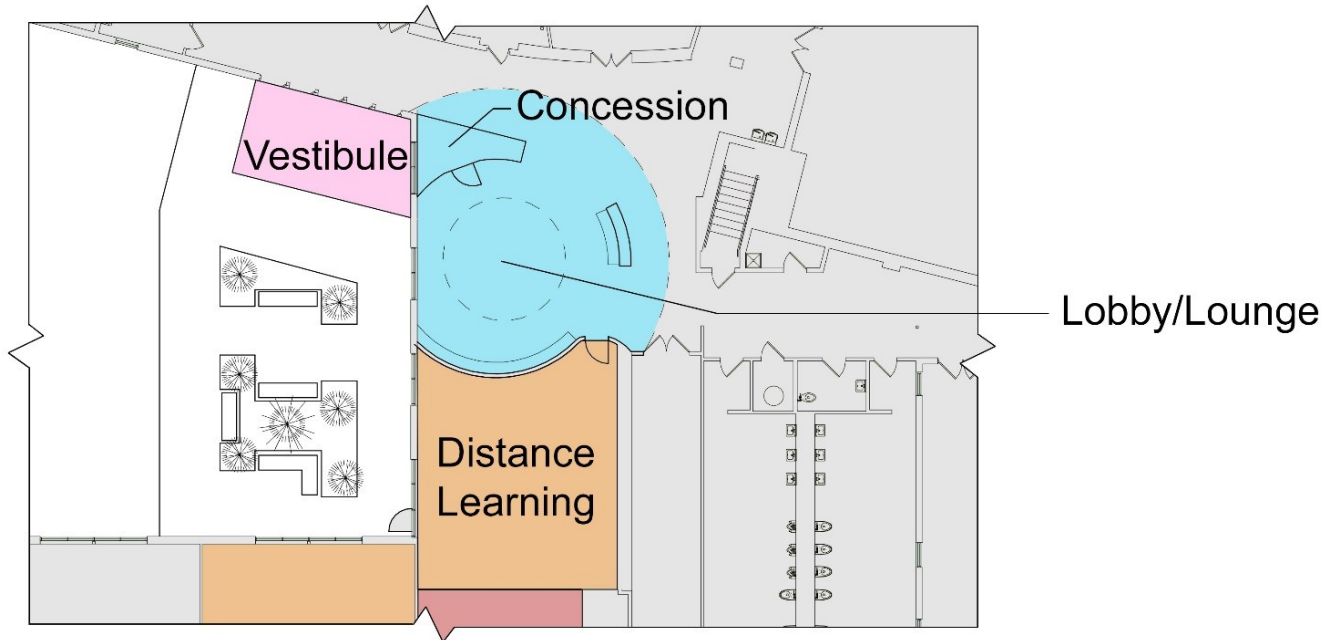
Secondary - New Lobby Space



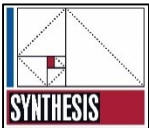
Key Plan



Existing First Floor Plan

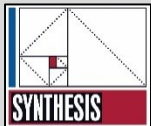
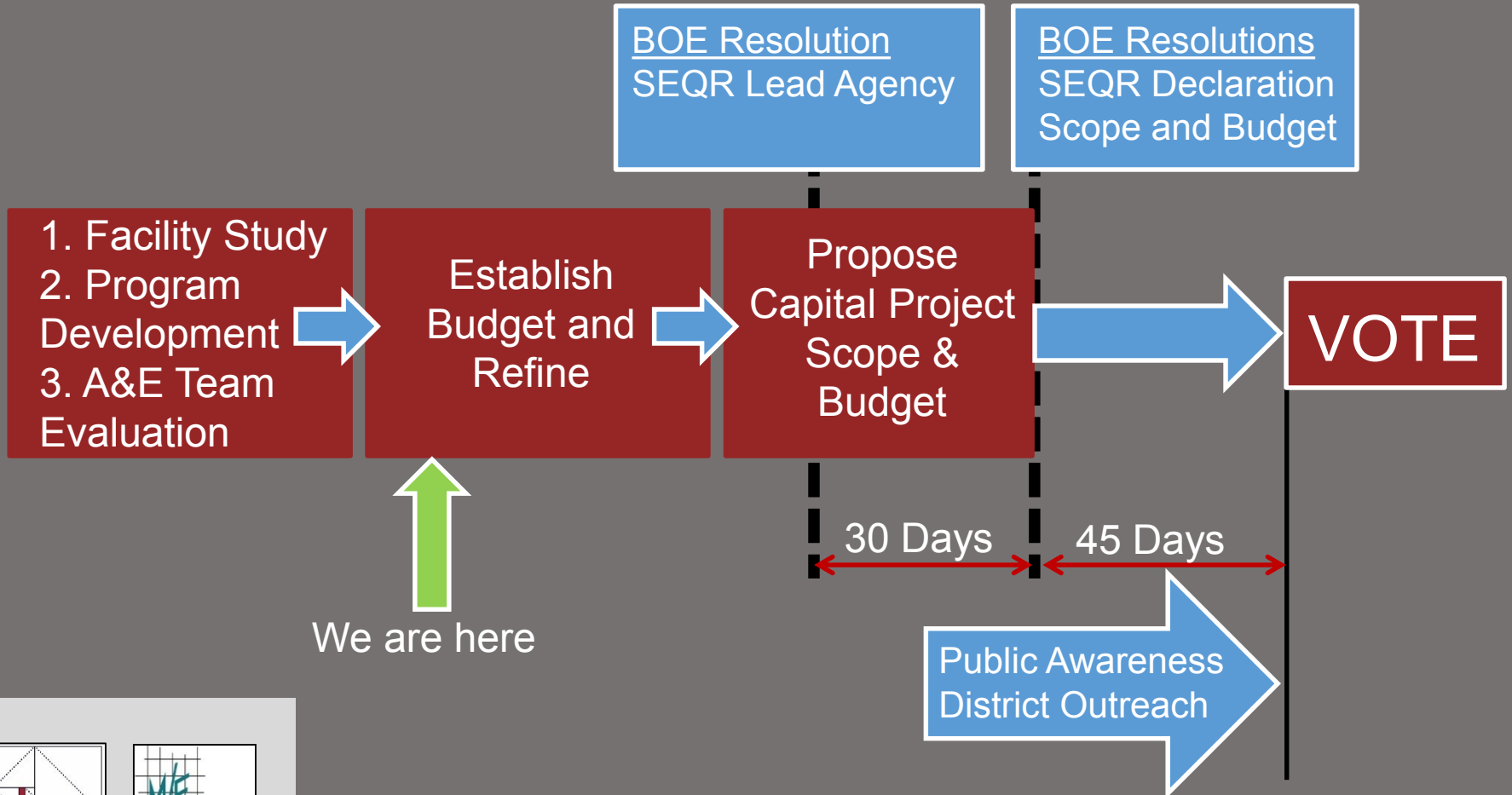


First Floor Plan





Overview of Pre-Referendum Process





Discussion

Q & A

